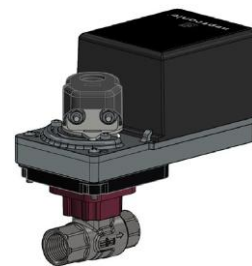


Models

B2AxxxxPS1: 2-way, 1/2" (DN15), female NPT
 B2BxxxxPS1: 2-way, 3/4" (DN20), female NPT
 B2CxxxxPS1: 2-way, 1" (DN25), female NPT
 B2DxxxxPS1: 2-way, 1 1/4" (DN32), female NPT
 B2ExxxxPS1: 2-way, 1 1/2" (DN40), female NPT
 B2FxxxxPS1: 2-way, 2" (DN50), female NPT



With B Series Actuators

Features

- 2-way valves available in 1/2" (DN15), 3/4" (DN20), 1" (DN25), 1 1/4" (DN32), 1 1/2" (DN40) and 2" (DN50)
- Compatible with Neptronic B series (50 in.lb [5.6 Nm]) and L series (140 in.lb [16 Nm]) actuators
- Small dimensions allow for easier installation
- Machined metal, equal-percentage characterized disc
- CV range from 0.3 to 230 (Kv 0.26 to 199)
- Control signal options include on/off, floating point or modulating (proportional)



With L Series Actuators

Models

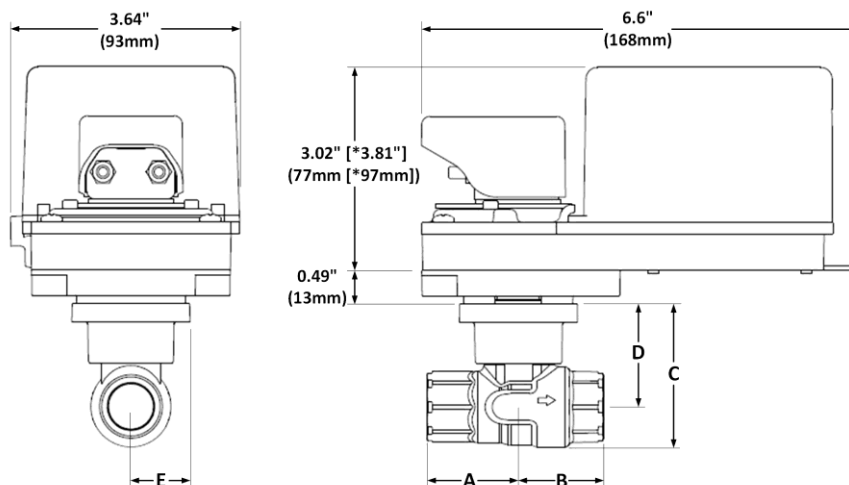
Size	2-Way Models	Cv	Kv	Size	2-Way Models	Cv	Kv
1/2" (DN15)	B2A0003PS1	0.3	0.26	1 1/4" (DN32)	B2D0100PS1	10	8.6
	B2A0005PS1	0.46	0.4		B2D0190PS1	19	16
	B2A0008PS1	0.8	0.7		B2D0250PS1	25	22
	B2A0012PS1	1.2	1		B2D0370PS1	37	32
	B2A0019PS1	1.9	1.64	1 1/2" (DN40)	B2E0190PS1	19	16
	B2A0030PS1	3	2.5		B2E0290PS1	29	25
	B2A0047PS1	4.7	4		B2E0370PS1	37	32
	B2A0074PS1	7.4	6.4		B2E0460PS1	46	40
	B2A0100PS1	10	8.6	2" (DN50)	B2F0290PS1	29	25
	B2A0160PS1	16	14		B2F0370PS1	37	32
3/4" (DN20)	B2B0047PS1	4.7	4		B2F0460PS1	46	40
	B2B0074PS1	7.4	6.4		B2F0570PS1	57	49
	B2B0100PS1	10	8.6		B2F0660PS1	66	57
	B2B0140PS1	14	12		B2F0850PS1	85	74
	B2B0240PS1	24	21		B2F1200PS1	120	104
1" (DN25)	B2C0074PS1	7.4	6.4		B2F2300PS1	230	199
	B2C0100PS1	10	8.6				
	B2C0190PS1	19	16				
	B2C0300PS1	30	26				

Technical Data

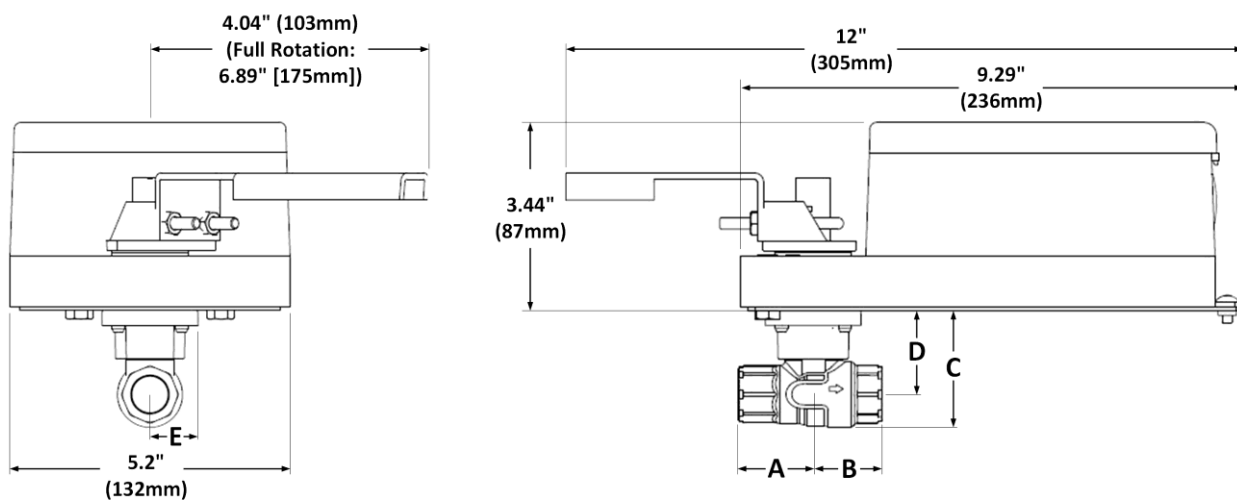
Specification			All Models
Actuator Compatibility			All Neptronic B and L series actuators
Sizes			1/2" to 2" [DN15 to DN50]
Range Cv [Kv]			0.3 to 230 [0.26 to 199]
Media Type			Water, Glycol 60%
Media Temperature Range			0°F to 250°F [-18°C to 120°C]
Pressure	Body	1/2" [DN15]	600 psi [4137 kPa]
		3/4" [DN20]	600 psi [4137 kPa]
		1" [DN25]	400 psi [2758 kPa]
		1-1/4" [DN32]	400 psi [2758 kPa]
		1-1/2" [DN40]	400 psi [2758 kPa]
		2" [DN50]	400 psi [2758 kPa]
	Close-Off		200 psi [1379 kPa]
	Differential		50 psi [345 kPa]
Leakage			0%
Materials	Body		Nickle-Plated Forged Brass
	Ball and Stem		Stainless-Steel
	Seats		PTFE
	Characterized Disc		Brass Characterized
	Stem O-Rings		EPDM
Flow Characteristic	A to AB		Equal Percentage
	Control Angle		75°
Flow Pattern			2-Way
			Flow A-AB
Rangeability			100:1
Valve	Connection		Female NPT

Dimensions

Mounted on B Series Actuators

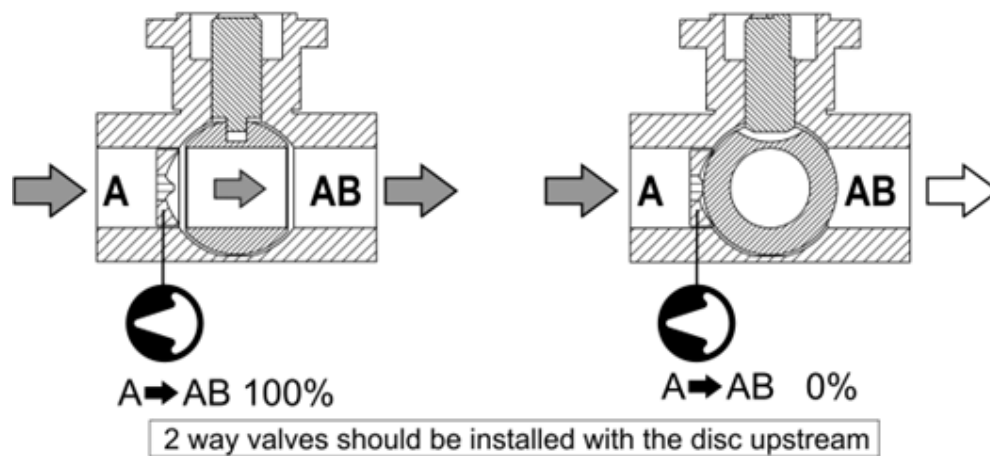


Mounted on L Series Actuators



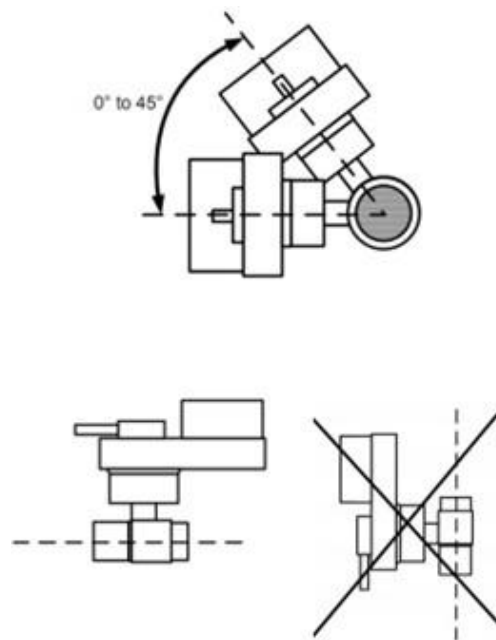
Valve Size	1/2" [DN15]	3/4" [DN20]	1" [DN25]	1-1/4" [DN32]	1-1/2" [DN40]	2" [DN50]
A	1.38" [35mm]	1.53" [39mm]	1.89" [48mm]	2.15" [55mm]	2.18" [56mm]	2.76" [70mm]
B	1.28" [33mm]	1.48" [38mm]	1.89" [48mm]	2.01" [51mm]	2.20" [56mm]	2.76" [70mm]
C	2.13" [54mm]	2.46" [63mm]	2.81" [72mm]	3.40" [86mm]	3.40" [86mm]	4.48" [114mm]
D	1.53" [39mm]	1.69" [43mm]	1.87" [48mm]	2.20" [56mm]	2.20" [56mm]	2.73" [69mm]
E	0.89" [23mm]	0.89" [23mm]	0.94" [24mm]	1.20" [31mm]	1.20" [31mm]	1.75" [45mm]

Mechanical Installation



Installation

The valve cannot be mounted vertically. If mounted horizontally the valve must be 0° to 45° off the horizontal line across the center of the pipe. Do not install with the actuator below pipe.



Recycling at end of life: please return this product to your Neptronic local distributor for recycling. If you need to find the nearest Neptronic authorized distributor, please consult www.neptronic.com.